

# PP12 & PP18 PurePak Modules



These disposable cartridges were developed to provide customers with a quick method to change out media in their air purification systems, specifically PureAir's Side Access Housing (SAH) units. The modules also fit seamlessly in competitor units and can be filled with PureAir's chemisorbant media.

## PurePak Module Standard Approximate Dimensions:

Model #	Height	Width	Depth	Media Volume	Media Bed Depth	Minimal Resistance
*PP12 Module	305 mm (12 in)	610 mm (24 in)	305 mm (12 in)	0.28 m <sup>3</sup> (1 ft <sup>3</sup> )	76.2 mm (3 in)	299 Pa @ 1.20 m/s (1.2 iwg @ 250 ft/min)
*PP18 Module	152 mm (6 in)	610 mm (24 in)	457 mm (18 in)	.014 m <sup>3</sup> (.5 ft <sup>3</sup> )	25.4 mm (1 in)	101 Pa @ 2.5 m/s (.405 iwg @ 500 ft/min)

\*One module is made up of two half modules. Chart dimensions are nominal. See engineering drawings for exact dimensions.

These notches are specifically designed to allow the modules to fit seamlessly into competitor units

**NOTE:**

- ONE FULL MODULE = (2) HALF MODULES



+1 678.935.1431  
 Toll Free: 866.543.7479  
[www.PureAirFiltration.com](http://www.PureAirFiltration.com)  
 6050 Peachtree Pkwy, Suite 240-187, Atlanta, GA, 30092 USA

## PurePak Module Features

- Factory filling assures no air bypass of media
- Reduced time for media changeout
- Less cleanup than using bulk media refilling
- Filled with choice of PureAir media
- 98% gas removal efficiency
- 100% Recyclable
- Model chosen depends on application and pressure drop
- Constructed of 0.125" thick, black, high-impact polystyrene

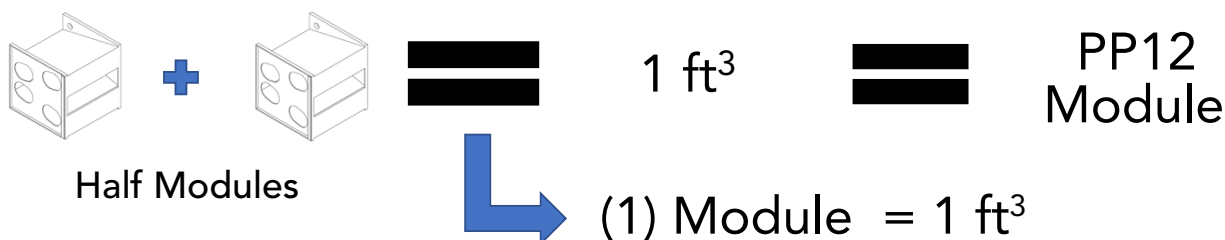
## Disposal Instructions

To recycle PurePak modules, used media should be discarded. The user may then take empty modules to a local recycling facility for disposal. While PureAir media is almost always readily disposable through normal municipal disposal methods, users should confirm local regulations prior to disposal.

### PurePak PP12 Specifications:

PP12 Module = 305 x 610 x 305 mm (12 x 24 x 12 in)

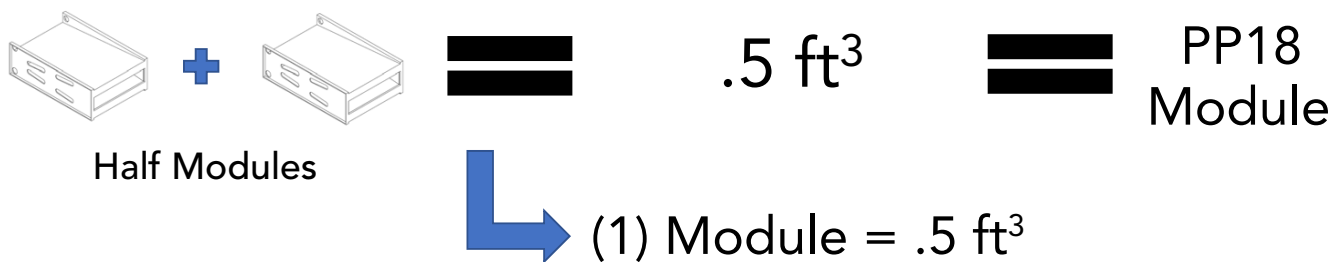
---

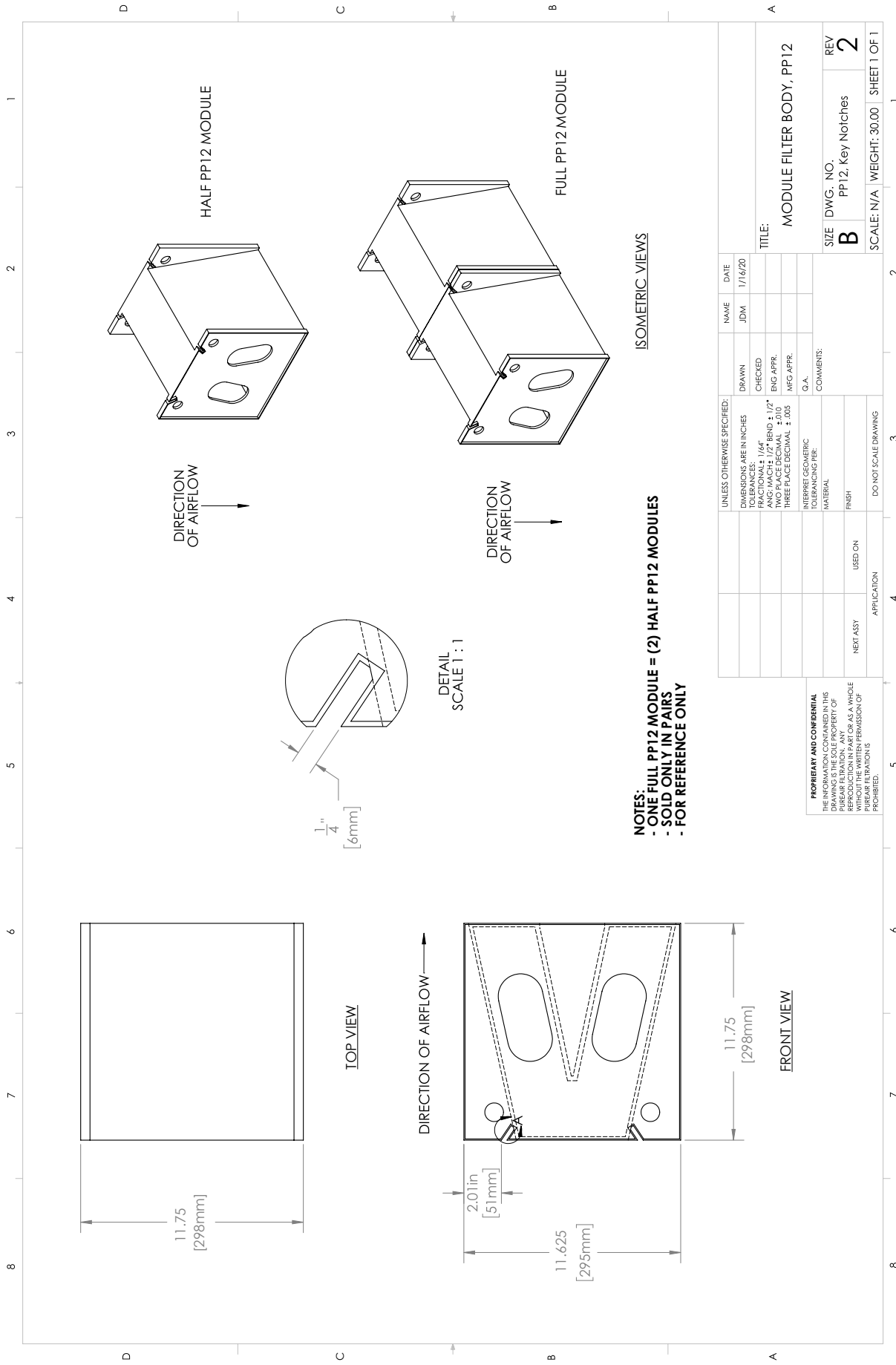


### PurePak PP18 Specifications:

PP18 Module = 152 x 610 x 457 mm (6 x 24 x 18 in)

---





**NOTES:**  
 - ONE FULL PP12 MODULE = (2) HALF PP12 MODULES  
 - SOLD ONLY IN PAIRS  
 - FOR REFERENCE ONLY

ISOMETRIC VIEWS

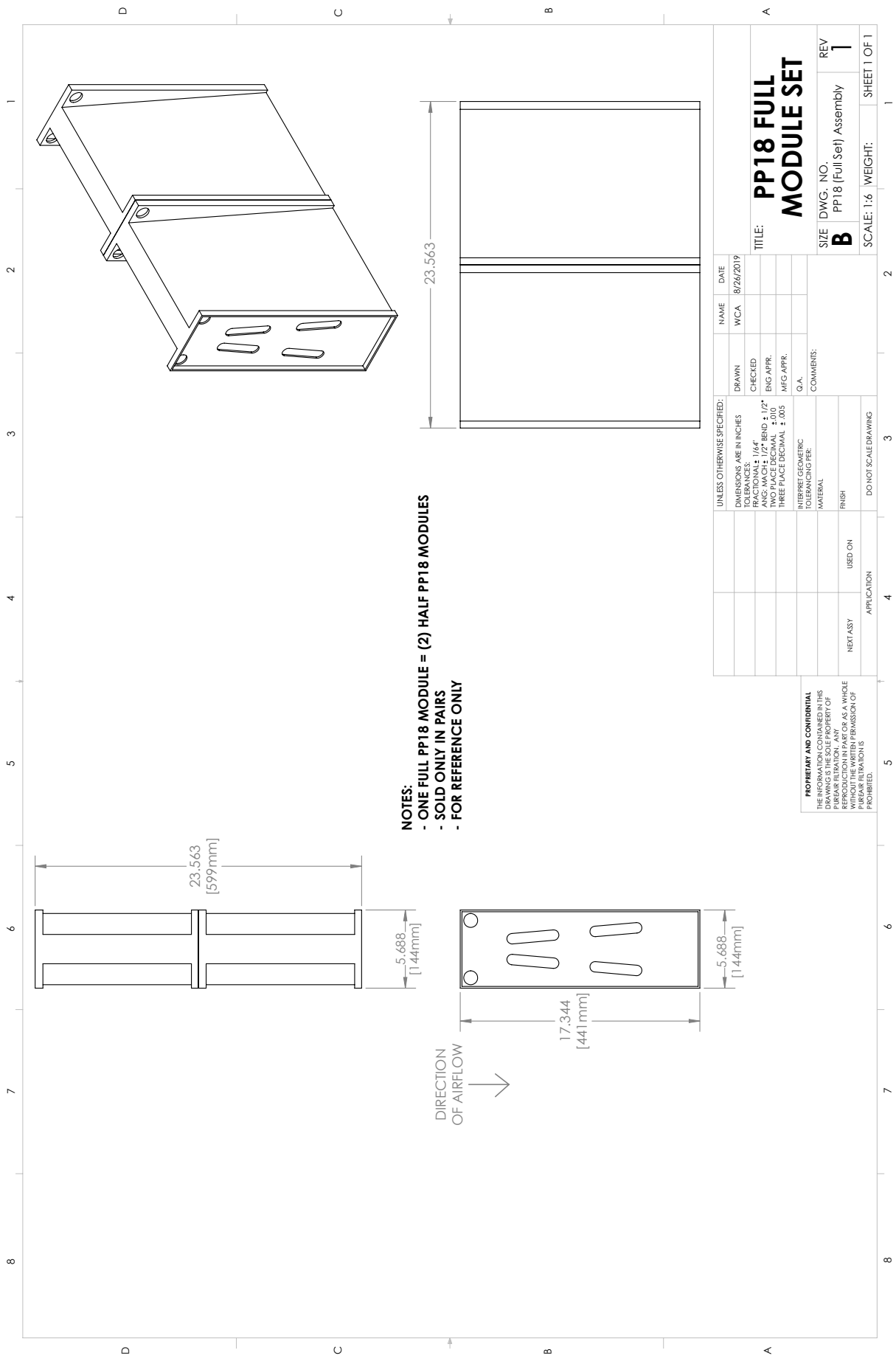
UNLESS OTHERWISE SPECIFIED:		NAME	DATE
DIMENSIONS ARE IN INCHES		JDM	1/16/20
FRACTIONAL DIMENSIONS SHALL BE FRACTIONAL ± 1/64"		CHECKED	
ANG: MACH ± 1/2° BEND ± 1/2°		ENG APPR.	
TWO PLACE DECIMAL ± 0.01		MEG APPR.	
THREE PLACE DECIMAL ± 0.00			
INTERPRET GEOMETRIC TOLERANCING PER:		Q.A.	
MATERIAL		COMMENTS:	
FINISH			
DO NOT SCALE DRAWING			

PROPRIETARY AND CONFIDENTIAL	
THE INFORMATION CONTAINED IN THIS DRAWING IS THE PROPERTY OF	
PUREAIR FILTRATION. ANY	
REPRODUCTION IN PART OR AS A WHOLE	
WITHOUT THE WRITTEN PERMISSION OF	
PUREAIR FILTRATION IS	
PROHIBITED.	

TITLE:	MODULE FILTER BODY, PP12
SIZE	DWG. NO.
<b>B</b>	PP12, Key Notches
REV	REV
	<b>2</b>
SCALE: N/A	WEIGHT: 30.00
	SHEET 1 OF 1



**NOTES:**  
 - ONE FULL PP18 MODULE = (2) HALF PP18 MODULES  
 - SOLD ONLY IN PAIRS  
 - FOR REFERENCE ONLY

UNLESS OTHERWISE SPECIFIED:		NAME	DATE
DRAWN	CHECKED	WCA	8/26/2019
ANG. MACH ± 1/2° BEND ± 1/2°	FRACTIONAL ± 1/64"		
TWO PLACE DECIMAL ± 0.01			
THREE PLACE DECIMAL ± 0.005			
Q. A.			
INTERPRET GEOMETRIC TOLERANCING PER:			
MATERIAL			
FINISH			
USED ON			
APPLICATION			
NEXT ASY			

**PROPRIETARY AND CONFIDENTIAL**  
 THE INFORMATION CONTAINED IN THIS DRAWING IS THE PROPERTY OF  
 PEGEAR CORPORATION. ANY  
 REPRODUCTION IN PART OR AS A WHOLE  
 WITHOUT THE EXPRESS PERMISSION OF  
 PEGEAR CORPORATION IS  
 PROHIBITED.

**TITLE: PP18 FULL MODULE SET**

SIZE DWG. NO. REV  
**B** PP18 (FullSet) Assembly **1**

SCALE: 1:6 WEIGHT: SHEET 1 OF 1