

PP12 & PP18 PurePak Modules



These disposable cartridges were developed to provide customers with a quick method to change out media in their air purification systems, specifically PureAir's Side Access Housing (SAH) unit. The cartridges also fit seamlessly in competitor units and can be filled with PureAir's chemisorbant media.

PurePak Module Standard Approximate Dimensions:

Model #	Height	Width	Depth	Media Volume	Media Bed Depth	Minimal Resistance
*PP12 Module	305 mm (12 in)	610 mm (24 in)	305 mm (12 in)	.03 m ³ (1 ft ³)	7.6 cm (3 in)	325 Pa @1.25 m/s (1.3 iwg @ 250 ft/min)
*PP18 Module	150 mm (6 in)	610 mm (24 in)	460 mm (18 in)	.015 m ³ (.5 ft ³)	2.5 cm (1 in)	125 Pa @2.5 m/s (.5 iwg @ 500 ft/min)

*One module is made up of two half modules. Chart dimensions are nominal. See engineering drawings for exact dimensions.

These notches were specifically designed to allow the modules to fit seamlessly into competitor units

NOTE:

- ONE FULL MODULE = (2) HALF MODULES



PurePak Module Features

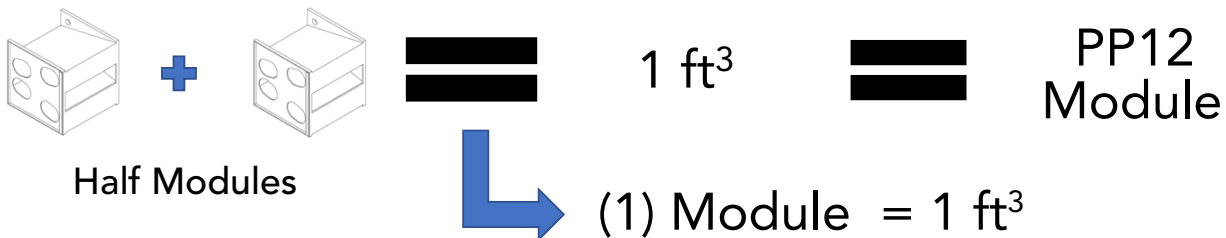
- Factory filling assures no air bypass of media
- Reduced time for media changeout
- Less cleanup than using bulk media refilling
- Filled with choice of PureAir media
- 98% gas removal efficiency
- 100% Recyclable
- Model chosen depends on application and pressure drop
- Constructed of 0.125" thick, black, high-impact polystyrene

Disposal Instructions

To recycle PurePak modules, used media should be discarded. The user may then take empty modules to a local recycling facility for disposal. While PureAir media is almost always readily disposable through normal municipal disposal methods, users should confirm local regulations prior to disposal.

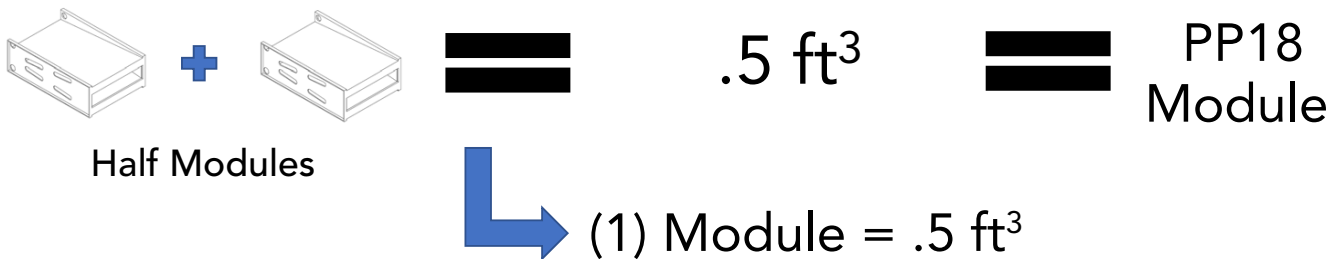
PurePak PP12 Specifications:

PP12 Module = 305 x 610 x 305 mm (12 x 24 x 12 in)

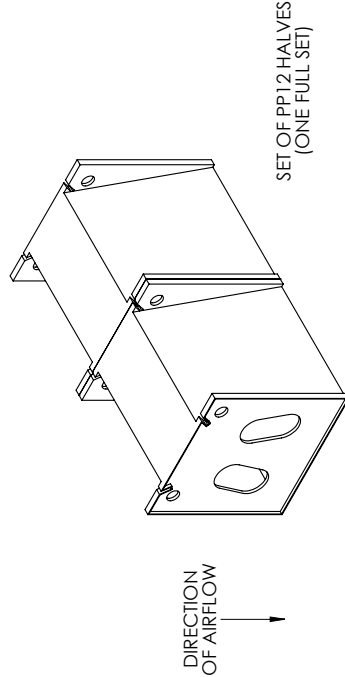
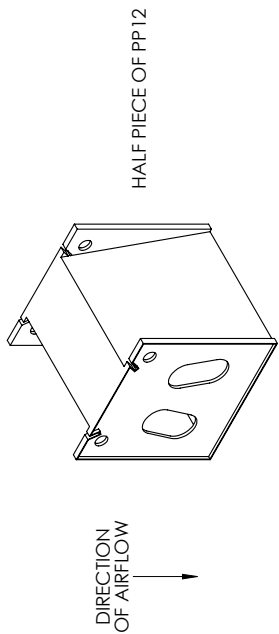
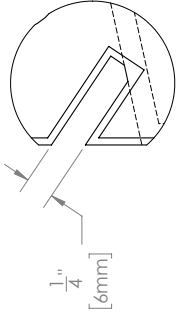
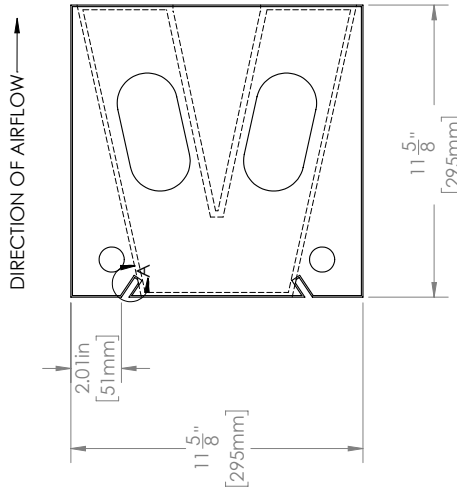
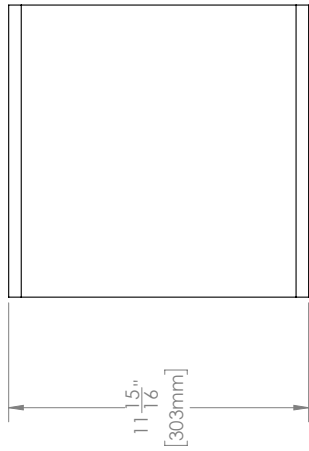


PurePak PP18 Specifications:

PP18 Module = 150 x 610 x 460 mm (6 x 24 x 18 in)



1 2 3 4 5 6 7 8

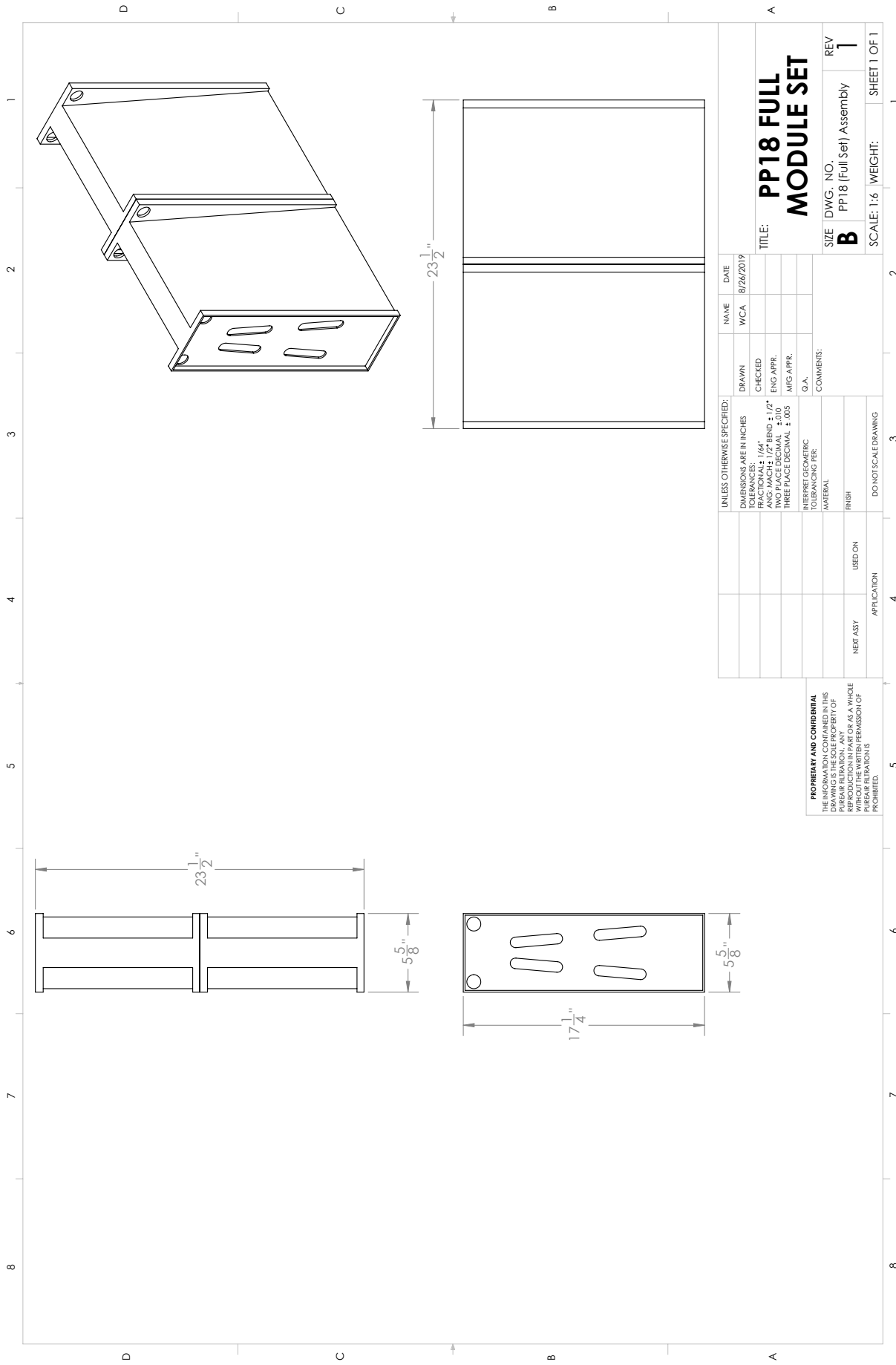


ISOMETRIC VIEWS

NOTES:
 - ONE FULL PP12 SET = (2) HALF SETS PP12 MODULES
 - SOLD ONLY IN SETS (PAIRS)
 - FOR REFERENCE ONLY

UNLESS OTHERWISE SPECIFIED:		NAME	DATE
DIMENSIONS ARE IN INCHES	DRAWN	JDM	1/16/20
FRAC. DIMS. TO 1/64"	CHECKED		
ANG. MACH: 1/2" BEND ± 1/2"	ENG APPR.		
TWO PLACE DECIMAL ± 0.01	MEG APPR.		
THREE PLACE DECIMAL ± 0.005	Q.A.		
INTERPRET GEOMETRIC TOLERANCING PER:	COMMENTS:		
MATERIAL			
FINISH			
DO NOT SCALE DRAWING			
APPLICATION	USED ON		
	NEXT ASSY		

PROPRIETARY AND CONFIDENTIAL THE INFORMATION CONTAINED IN THIS DRAWING IS THE PROPERTY OF THE COMPANY. ANY REPRODUCTION OR REPRODUCTION IN PART OR AS A WHOLE WITHOUT THE PERMISSION OF THE COMPANY IS PROHIBITED.	
TITLE:	MODULE FILTER BODY, PP12
SIZE	DWG. NO. PP12, Key Notches
REV	2
SCALE: N/A	WEIGHT: 30.00 SHEET 1 OF 1



UNLESS OTHERWISE SPECIFIED:		NAME	DATE
DIMENSIONS ARE IN INCHES	DRAWN	WCA	8/26/2019
DECIMALS SHALL BE TO TWO PLACES	CHECKED		
FRACTIONS SHALL BE TO 1/64"	ENG APPR.		
ANG. MACH. ± 1/2° BEND ± 1/2°	MEG APPR.		
TWO PLACE DECIMAL ± 0.01	Q.A.		
THREE PLACE DECIMAL ± 0.005	COMMENTS:		
INTERPRET GEOMETRIC TOLERANCING PER:			
MATERIAL			
FINISH			
DO NOT SCALE DRAWING			
APPLICATION			
NEXT LAST	USED ON		

PP18 FULL MODULE SET

SIZE DWG. NO. REV
B PP18 (Full Set) Assembly **1**
 SCALE: 1:6 WEIGHT: SHEET 1 OF 1

PROPRIETARY AND CONFIDENTIAL
 THE INFORMATION CONTAINED IN THIS DRAWING IS THE PROPERTY OF
 PUPPEAR RETRACTION. ANY
 REPRODUCTION IN PART OR AS A WHOLE
 WITHOUT THE PERMISSION OF
 PUPPEAR RETRACTIONS
 IS PROHIBITED.