

PP12 & PP18 PurePak Modules



These disposable or refillable cartridges were developed to provide customers with a method to quickly and cleanly change the media in their air purification systems, particularly PureAir's Side Access Housing (SAH) unit. Cartridges also fit competitor units and can be filled with PureAir's superior adsorbent media.

Benefits:

- Standard Approximate Dimensions

Model #	Height	Depth	Width	Media Volume (for set)	Media Bed Depth	Minimal Resistance
*PP12	305 mm (12 in)	305 mm (12 in)	610 mm (24 in)	.03 m ³ (1 ft ³)	7.6 cm (3 in)	325 Pa @1.25 m/s (1.3 iwg @ 250 ft/min)
*PP18	150 mm (6 in)	460 mm (18 in)	610 mm (24 in)	.015 m ³ (.5 ft ³)	2.5 cm (1 in)	125 Pa @2.5 m/s (.5 iwg @ 500 ft/min)

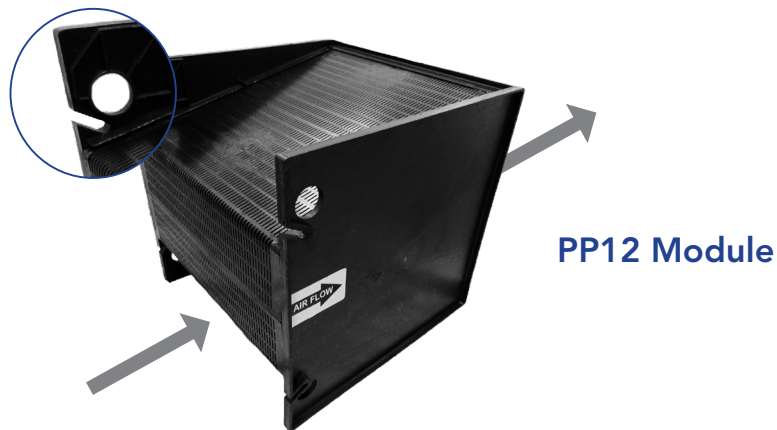
*Modules are sold in pairs. Dimensions in the chart are nominal. See engineering drawings for exact dimensions.

- Factory filling means no air bypass
- 100% recyclable
- Model chosen will depend on space restrictions and pressure drop

These notches were specifically designed to allow the cartridges to fit seamlessly into competitor units.

NOTES:

- ONE FULL PP12 SET = (2) HALF SETS PP12 MODULES
- SOLD ONLY IN SETS (PAIRS)



PP12 Module



PP18 Module

+1 678.935.1431

Toll Free: 866.543.7479

www.PureAirFiltration.com

6050 Peachtree Pkwy Suite 240-187. Atlanta, GA 30092 USA



Disposable Modules

This disposable cartridge is designed for commercial and industrial applications. It can be filled with any of PureAir's superior adsorbent media.

Product Features

- Factory filling assures no air bypass of media
- Reduced time to change system media
- Less cleanup than bulk media refilling
- Filled with choice of PureAir media
- 100% recyclable

Disposal Instructions: To recycle PurePak modules, used media should be discarded. The user may then take empty modules to a local recycling facility. While PureAir media is almost always readily disposable through normal municipal disposal methods, we advise users to confirm local regulations prior to disposal.

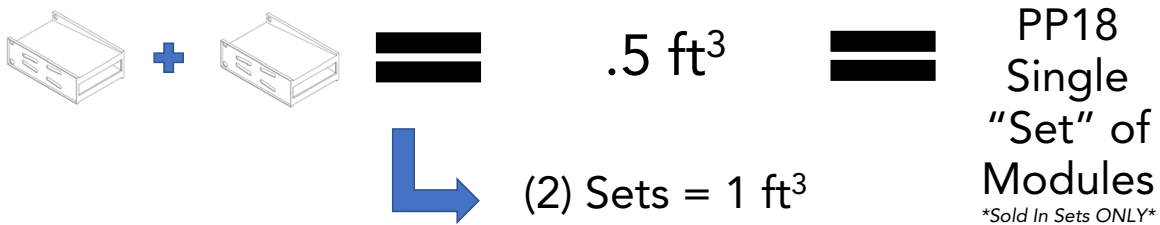
PurePak PP12 Specifications:

- Pressure Drop:
325 Pa @ 1.25 m/s
(1.3 iwg @ 250 ft/min)
- Media Bed Depth: 75 mm (3 in)
- Nominal Size:
Half Sized Cartridges (Sold in pairs)
152 x 152 x 305 mm
(12 x 12 x 24 in)
- Media Volume: .03 m³ (1 ft³)
- 98% efficient gas removal

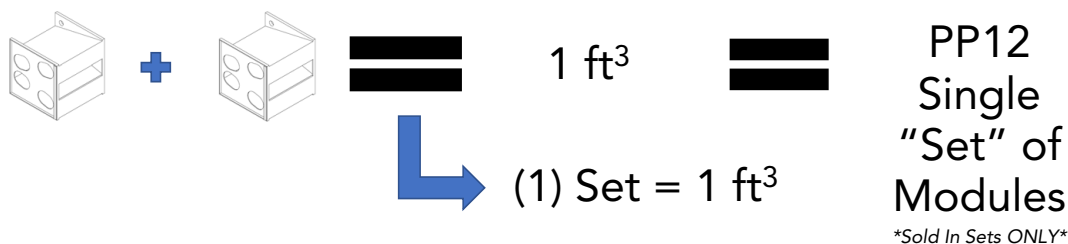
PurePak PP18 Specifications:

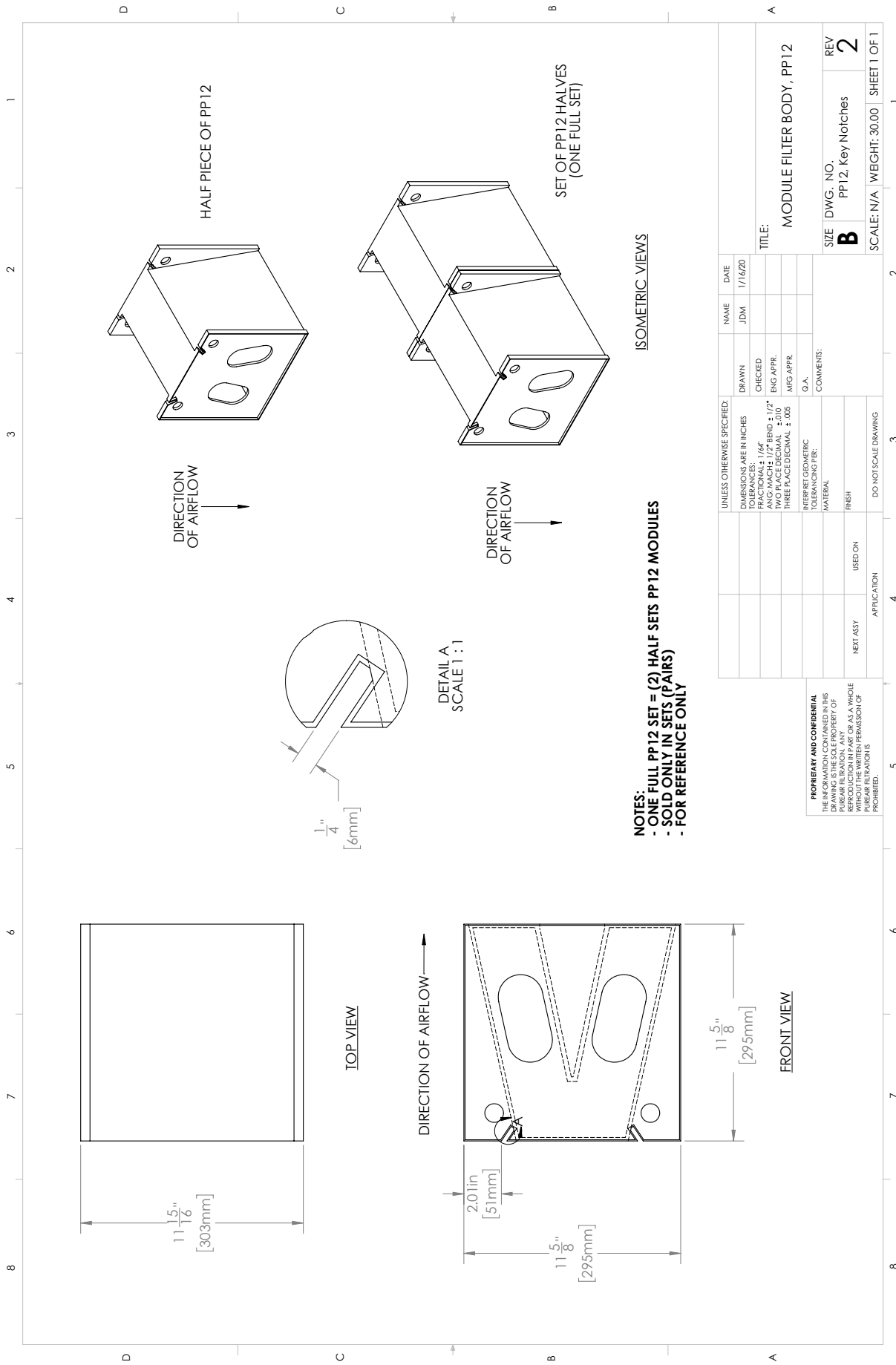
- Pressure Drop:
125 Pa @ 2.5 m/s
(.5 iwg @ 500 ft/min)
- Media Bed Depth: 25 mm (1 in)
- Nominal Size:
Half Sized Cartridges (Sold in pairs)
150 x 460 x 610 mm
(6 x 18 x 24 in)
- Media Volume: .015 m³ (.5 ft³)
- 98% efficient gas removal

PP18 (Set) = 460 x 610 x 150 mm (18 x 24 x 6 in)



PP12 (Set) = 152 x 305 x 152 mm (12 x 24 x 12 in)





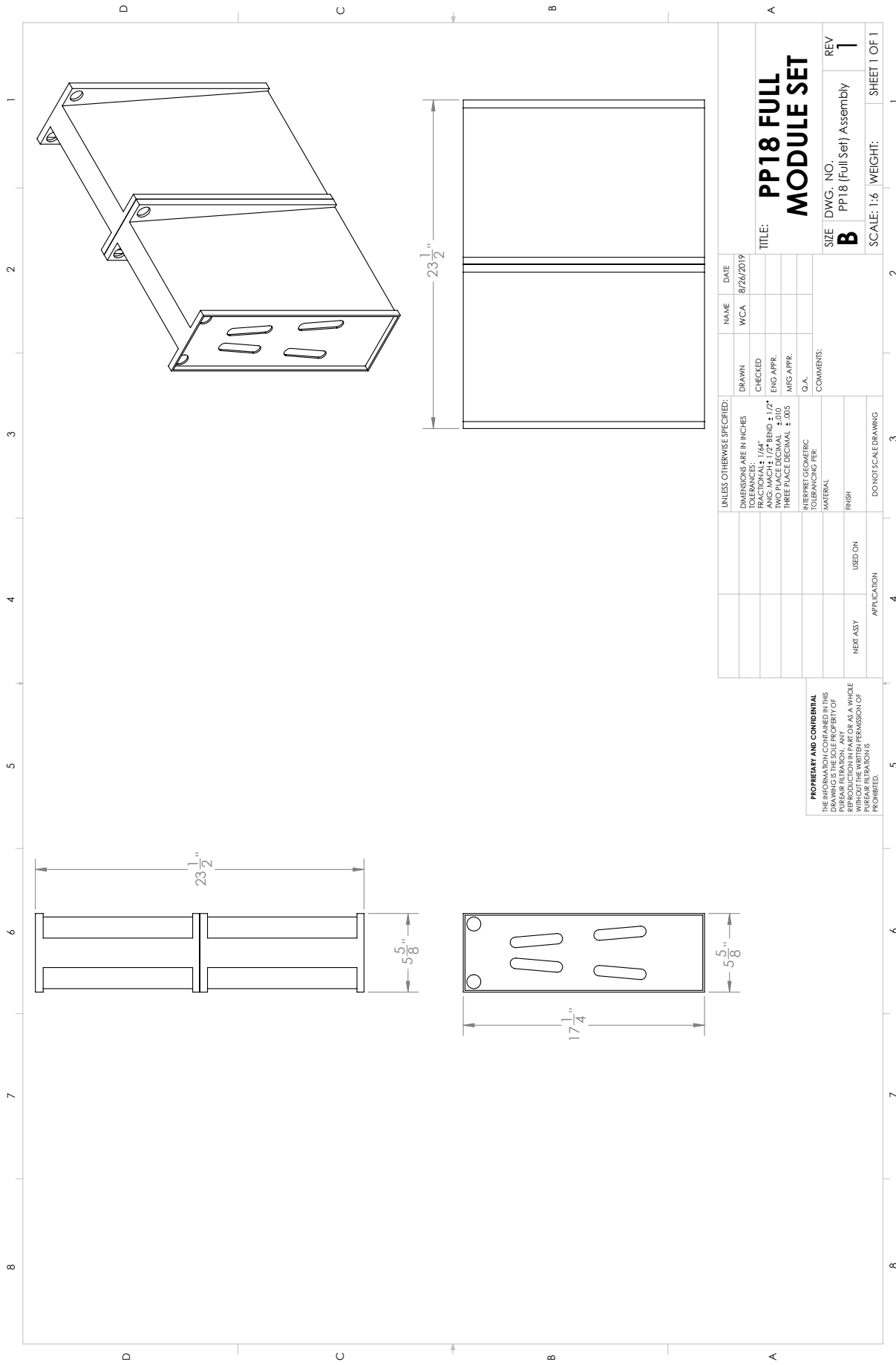
UNLESS OTHERWISE SPECIFIED:		NAME	DATE
DIMENSIONS ARE IN INCHES	DRAWN	JDM	1/16/20
FRAC. DIMENSIONS	CHECKED		
ANG. MACH: $\pm 1/2^\circ$ BEND $\pm 1/2^\circ$	ENG APPR.		
TWO PLACE DECIMAL ± 0.01	MEG APPR.		
THREE PLACE DECIMAL ± 0.005	Q.A.		
INTERPRET GEOMETRIC TOLERANCING PER:	COMMENTS:		
MATERIAL			
FINISH			
DO NOT SCALE DRAWING			
APPLICATION			
USED ON			
NEXT ASSY			

PROPRIETARY AND CONFIDENTIAL
 THE INFORMATION CONTAINED IN THIS DRAWING IS THE PROPERTY OF
 THE DRAWING COMPANY. ANY
 REPRODUCTION IN PART OR AS A WHOLE
 WITHOUT THE PERMISSION OF
 THE DRAWING COMPANY IS
 PROHIBITED.

TITLE: MODULE FILTER BODY, PP12

SIZE DWG. NO. REV
B PP12, Key Notches **2**

SCALE: N/A **WEIGHT:** 30.00 **SHEET 1 OF 1**



UNLESS OTHERWISE SPECIFIED:		NAME	DATE
DIMENSIONS ARE IN INCHES	DRAWN	WCA	8/26/2019
DECIMALS ARE TO TWO PLACES	CHECKED		
RATIONALS ARE TO 1/64"	ENG APPR.		
ANG. MACH. ± 1/2° BEND ± 1/2°	MEG APPR.		
TWO PLACE DECIMAL ± 0.01	Q.A.		
THREE PLACE DECIMAL ± 0.005	COMMENTS:		
INTERPRET GEOMETRIC TOLERANCING PER:			
MATERIAL			
FINISH			
USED ON			
NEXT LAST			
APPLICATION			
DO NOT SCALE DRAWING			

TITLE: PP18 FULL MODULE SET

SIZE DWG. NO. REV
B PP18 (Full Set) Assembly **1**
 SCALE: 1:6 WEIGHT: SHEET 1 OF 1

PROPRIETARY AND CONFIDENTIAL
 THE INFORMATION CONTAINED IN THIS DRAWING IS THE PROPERTY OF
 PUPPEAR RETRACTION. ANY
 REPRODUCTION IN PART OR AS A WHOLE
 WITHOUT THE PERMISSION OF
 PUPPEAR RETRACTIONS
 IS PROHIBITED.